

H250P-V

PILE WIND 250 250kg MOTORISED HOIST AND CONTROLLER



DESCRIPTION

The Jands H250P-V is a packaged pile wind hoist and control system ready to be used "out of the box", featuring a 250kg nominal lifting capacity, provision for 5 x 5mm wire ropes and 14m of drift.

A rotary limit switch, complying to EN954, is directly coupled to the gearbox output shaft, providing end-of-travel limits, and over-travel limits for connection to an external Emergency Stop system.

An incremental position encoder is used to monitor safety functions and can be connected to an external control system to allow positional control of the hoist.

An on board electronic inverter drive and proprietary diagnostics circuits allow for the monitoring of overload conditions, and for the connection of an external slack wire detector if required.

The integral inverter drive brings the hoist motor to a safe controlled stop before applying the primary motor brake. This safety feature, combined with the low-speed efficiency characteristic of the gearbox, ensures that the very highest levels of safety are achieved.

A Jands HCPB-H wall mount pendant kit (ordered separately) can be fitted to the hoist and features Up/Down controls, "Ready" & "Fault" indicators and a "Brake Test" pushbutton to verify operation of the motor brake.

A 24 pin I/O connector allows for remote connection of the HCPB-H control station, connection of a simple Up/Down hand held pickle control, or connection to an external positioning and speed control system.

The Jands H250P-V is designed, built and tested to comply with the requirements for a serial hoist to AS1418.2:1997.

OVERALL SPECIFICATIONS

Number of ropes	:	5
SWR type	:	5mm 7x19 steel core
Lifting Capacity	:	
@ 5m drift	:	425kg
@ 14m drift	:	250kg
Maximum lift height	:	14m
Speed (Nominal)	:	8m/min
Speed (Maximum)	:	14m/min
Motor Type	:	4 pole AC asynchronous
Motor Power	:	550W
Control System	:	750W VS Inverter
Braking system	:	
- Holding	:	Failsafe motor disc brake
- Dynamic	:	Inverter DC regenerative
Limit Switch	:	4P Rotary cam to EN954
Encoder	:	24V 500ppr quadrature
Power Supply	:	230V 50Hz 9.9A
Power Connector	:	10A 3 Pin
I/O Connector	:	ILME CDDF24
Dimensions	:	538(w) x 665(h) x 404(d)
Net/Shipping weight	:	50/65 kg

SUPPLIED ACCESSORIES

- JND-H250P-V Hoist
- Universal Quick-Fix mounting bracket
- User Manual

OPTIONS

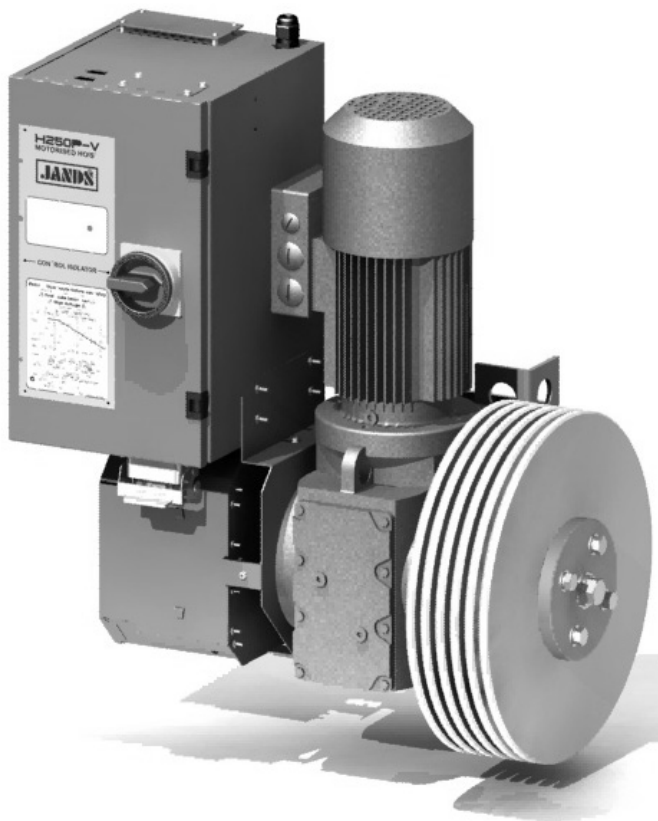
- JND-HCPC Hand Held Pickle Control
- JND-HCPB-H Wall Mount Pendant Kit

ORDERING INFORMATION

MODEL/PART	PART NUMBER
250kg Motorised Hoist & Control Station	JND-H250P-V
Wall Mount Pendant Kit (10 metre cable)	JND-HCPB-H
Hand Held Pickle Control (10 metre cable)	JND-HCPC

FEATURES

- Single phase 10A supply
- Integrated control system
- On board Isolator
- Direct coupled EN954 compliant limit switches
- Incremental position encoder
- Fail-Safe motor brake
- Regenerative DC braking
- Quick-Fix mounting bracket
- Optional control panel with Fault Indicator & Brake test facility
- Optional Up/Down "pickle"
- Optional slack wire detection, position control, variable speed and E-Stop management



Jands Pty Ltd 40 Kent Road Mascot NSW 2020 Australia
Phone +61 2 9582 0909 Fax +61 2 9582 0999 www.jands.com.au

PILE WIND 250
250kg MOTORISED HOIST
AND CONTROLLER

H250P-V

TSS JND-H250P-V-0805-09

H250P-V

**PILE WIND 250
250kg MOTORISED HOIST
AND CONTROLLER**



ARCHITECT & ENGINEER'S SPECIFICATION

Mechanical

The motorised hoist shall consist of cast and machined aluminium plates designed to accommodate five (5) steel cored, 5mm steel wire ropes of 7 x 19 construction, and shall be of a diameter sufficient to accommodate 14m of wire rope plus 2 dead turns.

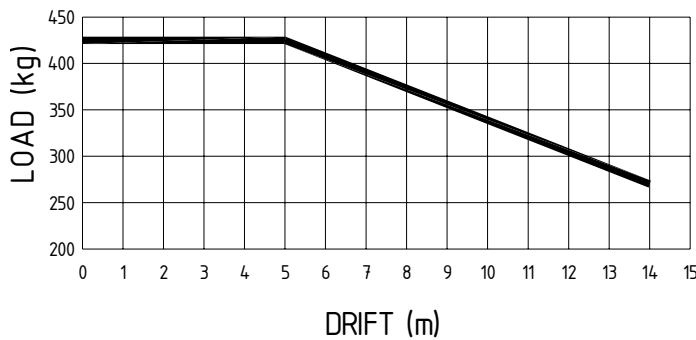
These aluminium plates shall be coupled via a keyed shaft and retaining bolts to a hollow shaft 158:1 ratio helical worm gearbox.

The motor and gearbox shall both be sized to allow a minimum hoist capacity of 250kg, and a failsafe motor input brake shall be fitted, capable of arresting at least 200% of the hoist capacity.

The low speed (<150rpm) efficiency of the gearbox shall be less than 50% to prevent descent of the hoist load in the event of a motor brake failure.

The motorised hoist shall be designed, tested and built as a serial hoist in accordance to AS1418.2:1997.

The motorised hoist shall be the Jands H250P-V



Electrical

The motorised hoist shall be powered by a 550W, 4 pole AC asynchronous motor, driven from an integral electronic inverter drive with a capacity of 750W.

The hoist shall be powered from a single phase, 230V 50Hz 10A supply and shall be fitted with a captive flexible supply cord fitted with a 3 pin plug to AS3112:2004

A 4 pole rotary limit switch, directly coupled to the gearbox output shaft and complying with EN954-1:1996, shall provide both service and over-travel limit functions to AS1418.1:2002.

The limit switch assembly shall be fitted with a quadrature type incremental encoder. This encoder shall provide a tachometer signal to a control unit which monitors the limit switch coupling and performs a primary brake test of the hoist.

The motorised hoist shall be fitted with a lockable "Drive Off" type control isolator.

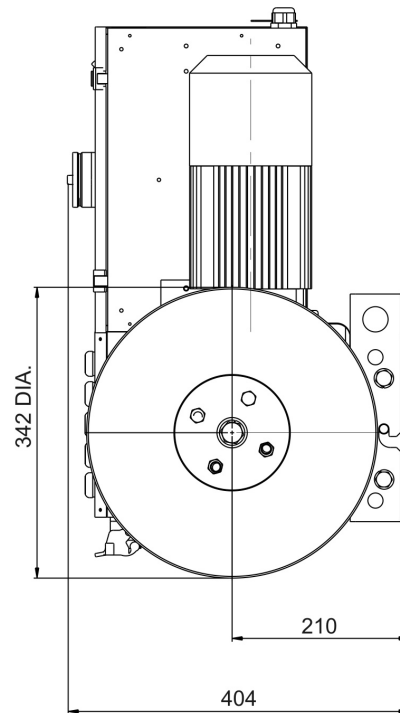
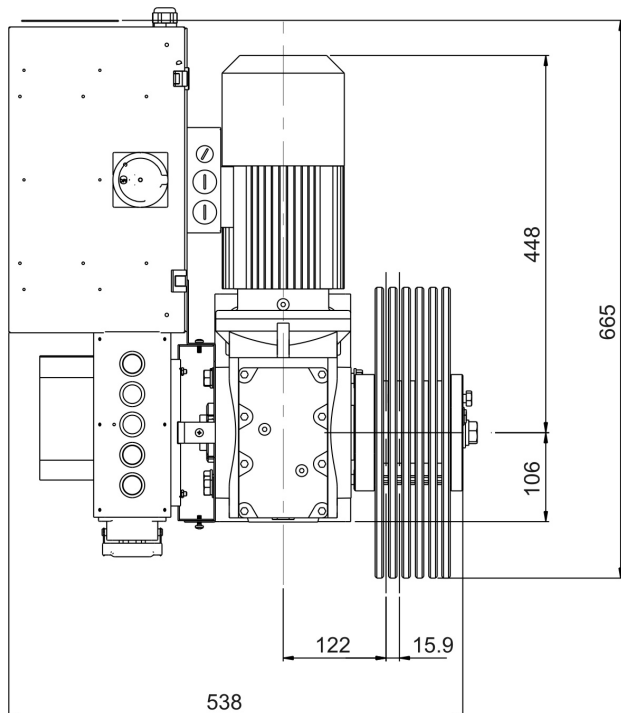
An optional control station shall be able to be fitted to the motorised hoist, or fitted remotely via a 24 pin I/O connector.

This control station shall feature "Enable" and "Fault" indicators, "Brake Test" pushbutton and a pair of momentary (Dead-Man) action Up/Down pushbuttons.

The I/O connector shall permit the connection of an (optional) external slack wire detector, external positioning control system, speed controls or a simple Up/Down hand held pickle control.

"Enable" inputs and over-travel monitor outputs on the I/O connector shall permit connection of the hoist to an external Emergency Stop Management system.

The motorised hoist shall be the Jands H250P-V.



**PILE WIND 250
250kg MOTORISED HOIST
AND CONTROLLER**

H250P-V

Jands Pty Ltd 40 Kent Road Mascot NSW 2020 Australia
Phone +61 2 9582 0909 Fax +61 2 9582 0999 www.jands.com.au