

DESCRIPTION

The Jands WM-Patch is a wall/rack mounting patch panel system that can be configured by the end user to suit the requirements of most permanent dimmer systems.

A WM-Patch 24A comes supplied with 2 pre-wired modules, each fitted with 12 x 10 amp lead and plug circuits, providing a 24 way patch capacity. An additional 4 pre wired modules can easily be fitted to extend the capacity of the patch system to 72 x 10 amp lead and plugs, in increments of 12 circuits per module.

Alternatively the WM-Patch system can be configured to accommodate up to 36 x 20 amp lead and plug circuits or 36 x 10 amp (or 20 amp) sockets in increments of 6 circuits per module, with a maximum capacity of 6 modules.

It is possible to mix and match lead/plug modules with socket modules so long as the basic capacity of 6 modules per patch frame is not exceeded. For example it is possible to configure a WM Patch system to have 36 x 10 amp lead and plugs together with 18 x 10 amp or 20 amp sockets.

FEATURES

- Supplied complete with 2 pre-wired 12 way 10 amp lead modules
- Supplied complete with detachable wall/rack mounting bracket
- Up to 6 (lead and plug or socket) modules can be accommodated
- Unused spaces are filled with blank modules
- Up to 72 x 10 amp leads and plug circuits, in increments of 12 circuits per module
- Up to 36 x 20 amp leads and plugs circuits, in increments of 6 circuits per module
- Up to 36 x 10 amp sockets, in increments of 6 circuits per module
- Up to 36 x 20 amp sockets, in multiples of 6 circuits per module
- Socket module is able to be fitted to both sides by rotating sockets
- Test circuit with RCD and test lamp option
- Compatible shape with Jands HPWM and FPWM Series dimmers
- Low profile
- Easy cable access via large rear opening

ORDERING INFORMATION

COMPLETE SYSTEMS	PART NUMBER
• WM-PATCH system c/w 1 module providing 12 10A leads and plugs numbered 1-12	JND-WM-PATCH 12A
• WM-PATCH system c/w 2 module providing 24 10A leads and plugs numbered 1-24	JND-WM-PATCH 24A
• WM-PATCH system c/w 3 module providing 36 10A leads and plugs numbered 1-36	JND-WM-PATCH 36A
• WM-PATCH system c/w 4 module providing 48 10A leads and plugs numbered 1-48	JND-WM-PATCH 48A
• WM-PATCH system c/w 5 module providing 60 10A leads and plugs numbered 1-60	JND-WM-PATCH 60A
• WM-PATCH system c/w 6 module providing 72 10A leads and plugs numbered 1-72	JND-WM-PATCH 72A
COMPONENTS	PART NUMBER
• WM-PATCH basic frame c/w 5 blank modules	JND-WM-PATCH 0
• 12 x 1.7m 10A cables numbered 1-12 and Aust 10A plugs	JND-WM-P10A0112
• 12 x 1.7m 10A cables numbered 13-24 and Aust 10A plugs	JND-WM-P10A01324
• 12 x 1.56m 10A cables numbered 25-36 and Aust 10A plugs	JND-WM-P10A02536
• 12 x 1.56m 10A cables numbered 37-48 and Aust 10A plugs	JND-WM-P10A03748
• 12 x 1.42m 10A cables numbered 49-60 and Aust 10A plugs	JND-WM-P10A04960
• 12 x 1.42m 10A cables numbered 61-72 and Aust 10A plugs	JND-WM-P10A06172
• 6 x 1.7m 20A cables numbered 1-6 and Aust 20A plugs	JND-WM-20A0106
• 6 x 1.7m 20A cables numbered 7-12 and Aust 20A plugs	JND-WM-20A0712
• 6 x 1.56m 20A cables numbered 13-18 and Aust 20A plugs	JND-WM-20A1318
• 6 x 1.56m 20A cables numbered 19-24 and Aust 20A plugs	JND-WM-20A1924
• 6 x 1.42m 20A cables numbered 25-30 and Aust 20A plugs	JND-WM-20A2530
• 6 x 1.42m 20A cables numbered 31-36 and Aust 20A plugs	JND-WM-20A3136
• 6 x 10A Socket module	JND-WM-S6A10
• 6 x 20A Socket module	JND-WM-S6A20
• Test 10A outlet w RCD & test lamp assembly	JND-WM-TESTA10

OVERALL SPECIFICATIONS

Dimensions: 482mm(W) 158mm(D)_485mm (H)
(excluding patch leads)

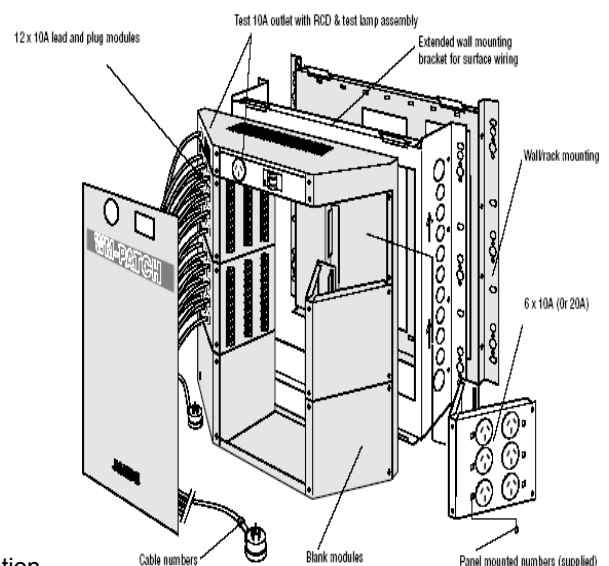
Net/shipping weight: 12.5 / 15 kg

SUPPLIED ACCESSORIES

- Wall/rack mounting bracket

OPTIONS

- 12 x 10A pre-wired lead and plug modules in different cable lengths
- 6 x 20A pre-wired lead and plug module in different cable lengths
- 6 x 10A pre-wired socket module
- 6 x 20A pre-wired socket module
- Test lamp c/w captive lead & test 10A outlet with RCD
- Extended wall mounting bracket for surface mounted cabling application





ARCHITECT & ENGINEERS SPECIFICATIONS

Electronics

The patch test module shall have the option of including a Residual Current Device / Circuit Breaker capable of detecting a load drawing in excess of 10 amps and Earth faults in excess of 30mA. It shall also contain a test lamp with a load of 25 watts.

Electrical

The patch test module shall operate from a single phase 240 volt AC supply with a nominal frequency of 50Hz. It shall have an optional test lamp which draws a nominal load of 25 watts at 240 volts RMS. The lead for the test lamp shall be 1.5mm² cable 1.7m long and fitted with a moulded piggy back style Australian plug on the end. The output socket shall be rated to 10 Amps and be protected by an integral MCB/RCD unit rated to 10 amps and earth leakage protection of 30mA maximum.

The 10 amp lead and plug module shall have twelve (12) leads of 1.5mm² cable with a moulded piggy back style Australian plug on the end. Internal connections shall be made via pre-wired terminal strips. The 20 amp lead and plug module shall have six (6) leads of 2.5mm² cable with a standard 20 amp Australian male plug on the end. Internal connections shall be made via pre-wired terminal strips.

The 10 amp socket module shall have six (6) 10 amp Australian sockets internally pre-wired to terminal strips using 1.5mm² cable. The 20 amp socket module shall have six (6) 20 amp Australian sockets internally pre-wired to terminal strips using 2.5mm² cable.

All modules shall have at least one point of attachment for an earthing strap to affix back to the main chassis of the patch unit. The wall mount patch shall be installed by a licensed contractor in accordance with AS-3000 and any other standards required by local laws.

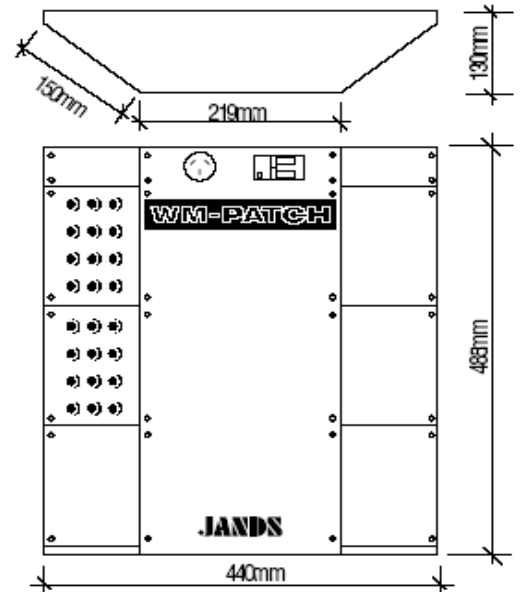
Mechanical

The patch fitted with the supplied wall mounting bracket shall be 482mm wide x 158mm deep by 485mm high. The patch shall be constructed of 1.2mm steel, and shall be provided with a removable front cover for access to internal electrical wiring. All metal surfaces of the patch system and accessories shall be properly treated and finished in powdercoat or zinc passivating.

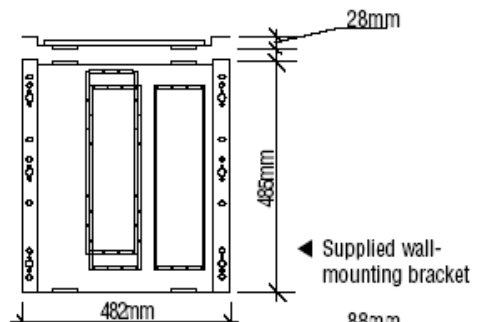
A separate wall mounting bracket shall allow the contractor to install the cabling to the proposed patch location, prior to the actual on-site installation of the patch unit itself. An optional extended mounting bracket will facilitate the installation of the patch in some applications. Where a module is not supplied with the patch, blank panels shall be supplied to match the finish of the patch system.

The patch system shall be of similar appearance to the Jands HPWM and FPWM series of dimmers. Adequate ventilation must be provided.

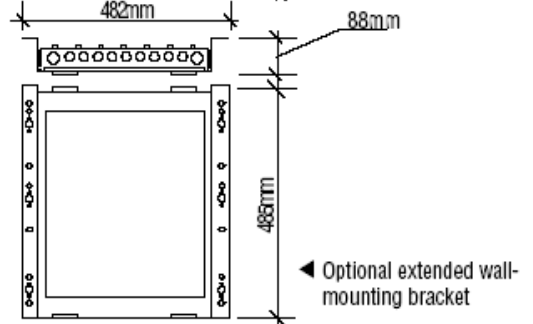
The patch system shall be the JANDS WM-PATCH.



▲ WM-PATCH

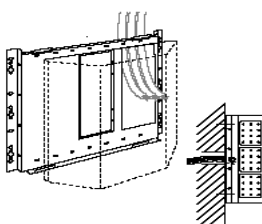


▲ Supplied wall-mounting bracket

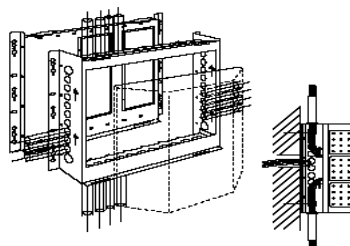


▲ Optional extended wall-mounting bracket

1 THROUGH WALL CABLE ENTRY



2 SURFACE MOUNTED CONDUIT



3 CABLE TRAY (shown with top/bottom conduit plates removed)

