

# Event408 Event416

Control Consoles

TBJLT110.doc



Date: 22 September 2006

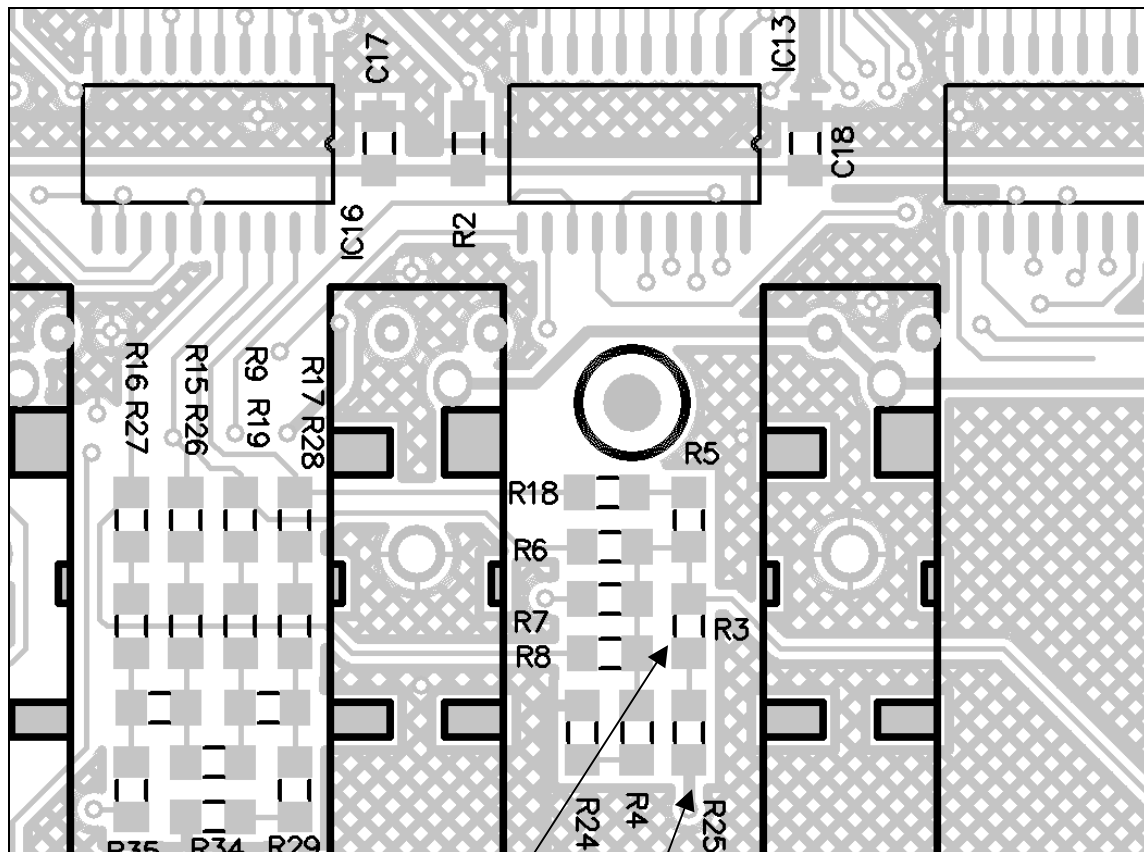
## Resistor Changes for Replacement LCD Module

As of August 2006 the 40x2 LCD module used in Event4 Master and Assign cards has been replaced with an alternate brand. This LCD module will also be supplied when spare parts are required.

The new LCD requires a small number of resistor changes to accommodate a difference in contrast range. The resistor changes for the Master Card are detailed in Table 1; the resistor changes for the Assign card are detailed in Table 2.

Resistor	Original Seiko L4052-21J000 Jands #ZLC1100	New Newtec WH4002A Jands #ZLC1105
R3	4K7	10K
R25	2K2	10K

Table 1: Resistor values for Event4 Master Card



Master Card Resistor Locations

Resistor	Original Seiko L4052-21J000 Jands #ZLC1100	New Newtec WH4002A Jands #ZLC1105
R24	4K7	10K
R1	2K2	10K

Table 2: Resistor values for Event4 Assign Card

Assign Card Resistor Locations

