

# DD6-2 OPTO-ISOLATED DMX-512 DATA SPLITTER



## DESCRIPTION

The Jands DD6-2 is an opto-isolated DMX splitter designed to provide distribution from one (1) 5-pin DMX input to six (6) opto-isolated 5-pin DMX outputs and two (2) opto-isolated 3-pin DMX outputs. The 3-pin outputs are provided with individual phase reversal switches, allowing for easy interface with equipment using non-standard DMX-512 wiring and connectors.

## FEATURES

- \* Accepts industry standard USITT DMX-512/1990 protocol
- \* Six (6) x 5-pin AXR and two (2) x 3-pin AXR opto-isolated DMX outputs
- \* Phase reverse switches on 3-pin AXR outputs with LED indicators
- \* DMX through connection and terminate switch
- \* Protects connected devices in the event of mains-voltage faults along the DMX line
- \* Power and Signal LEDs
- \* Universal switch-mode power supplies (100V - 240V AC)
- \* IEC mains input with integral fuse and filter
- \* 500V isolation between DMX outputs and chassis
- \* **CE** and **✓** approved

## OVERALL SPECIFICATIONS

Power supply: Universal switched-mode 100 - 240 V AC, 40 - 80Hz

Consumption: 25 W max.

Mains Input

Connector: IEC 3-pin with integral fuse

Fuse: T315mA M205 slow blow

Max. ambient

operating temperature: 40°C

DMX in: 1 x USITT DMX-512 / 1990 AXR 5-pin  
PCB mounted plug

- Pin-1 DMX gnd
- Pin-2 DMX -ve
- Pin-3 DMX +ve
- Pin-4 Not Used
- Pin-5 Not Used

DMX through: 1 x USITT DMX-512 / 1990 AXR 5-pin  
PCB mounted socket

- Pin-1 DMX gnd
- Pin-2 DMX -ve
- Pin-3 DMX +ve
- Pin-4 Not Used
- Pin-5 Not Used

DMX out: 6 x USITT DMX-512 / 1990 AXR 5-pin  
(opto-isolated) PCB mounted sockets

- Pin-1 Chassis gnd
- Pin-2 DMX -ve
- Pin-3 DMX +ve
- Pin-4 Not Used
- Pin-5 Not Used

2 x AXR 3-pin PCB mounted sockets

- |                   |                   |
|-------------------|-------------------|
| (ø switch OUT)    | (ø switch IN)     |
| Pin-1 Chassis gnd | Pin-1 Chassis gnd |
| Pin-2 DMX -ve     | Pin-2 DMX +ve     |
| Pin-3 DMX +ve     | Pin-3 DMX -ve     |

Dimensions (mm): 483(W) × 195(D) × 44(H) (1RU)

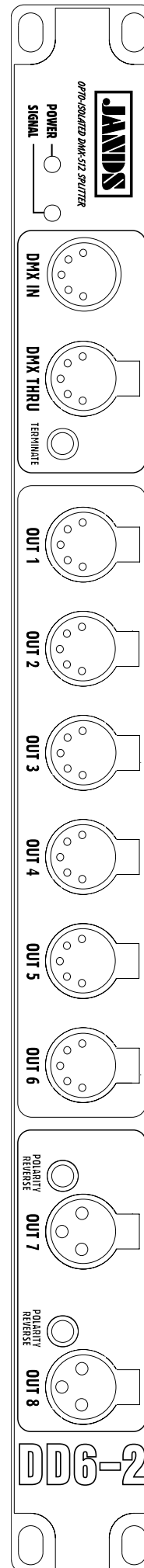
Net/shipping weight: 2.1/4.1 kg

## SUPPLIED ACCESSORIES

- 2m IEC to Clipsal 463 power cable (export models may vary)
- Operating manual

## ORDERING INFORMATION

MODEL/PART	PART NO.
• DD6-2 Opto-Isolated DMX Splitter	JND-DD6-2



◀ DD6-2

OPTO-ISOLATED DMX-512 DATA SPLITTER

DD6-2

# DD6-2 OPTO-ISOLATED DMX-512 DATA SPLITTER



## ARCHITECTS & ENGINEERS SPECIFICATION

### Electronics

The opto-isolated DMX-512 splitter shall have one (1) DMX input connection, one (1) DMX thru connection and eight (8) DMX output connections. The DMX In and Thru sockets shall be standard USITT DMX-512/1990 5-pin AXR connectors. Six (6) DMX Output sockets shall be standard USITT DMX-512/1990 5-pin AXR connectors and two (2) DMX Output sockets shall be 3-pin AXR connectors. All DMX-512 input, thru and output connections shall be PCB mounted.

The opto-isolated DMX-512 splitter shall have a switch for each 3-pin AXR DMX output that shall reverse the polarity (phase) of the DMX output on the associated connector.

The opto-isolated DMX-512 splitter shall use a blue LED to indicate that the unit has power, a green LED to indicate DMX signal present and two (2) LEDs to indicate output phase reversal switches are switched to reverse phase.

The opto-isolated DMX-512 splitter shall use industry standard USITT DMX-512/1990 protocol.

The DMX circuitry shall incorporate an internal DMX termination switch to bypass the DMX thru connection into a 110 ohm load.

The opto-isolated DMX-512 splitter outputs shall be protected against short circuit faults. Electrical isolation between outputs and chassis shall be 500V AC. DMX inputs and outputs shall be protected against continuous 250V AC active/neutral across DMX positive/negative.

The opto-isolated DMX-512 splitter shall buffer the DMX signal when the unit is on, and shall provide a bypass connection when the unit is off.

The opto-isolated DMX-512 splitter shall be factory tested and cyclically burned in for a minimum of 12 hours.

The opto-isolated DMX-512 splitter shall incorporate design techniques and electronic filters to comply with Australian and European Union directives on electrical safety and electromagnetic compatibility (EMC).

The opto-isolated DMX-512 splitter shall incorporate design techniques and electronic filters to comply with Australian and European Union directives on electrical safety and electromagnetic compatibility (EMC).

### Electrical

The opto-isolated DMX-512 splitter shall operate from a single-phase supply of 100 to 240 volts AC, with a supply frequency of 40 to 80 Hz.

The units power supply shall be a universal-type switched mode type requiring no changes to internal links to accommodate different supply voltages within the specified range.

The unit shall not draw more than 25 watts of power from a normal GPO. The power inlet shall be an IEC mains socket with integral fuse and filter, and shall be located on the back panel of the unit.

### Mechanical

The opto-isolated DMX-512 splitter shall be designed to mount in a standard 19-inch equipment rack.

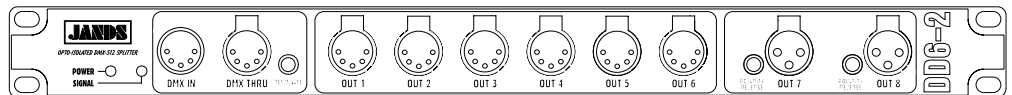
The opto-isolated DMX-512 splitter shall be 482mm wide (19") × 195mm deep × 44mm high (1RU).

The unit shall be constructed of 1.2mm steel, and shall be provided with a removable lid for access to internal electronics. All metal surfaces shall be properly treated and finished in powdercoat or bright zinc passivating.

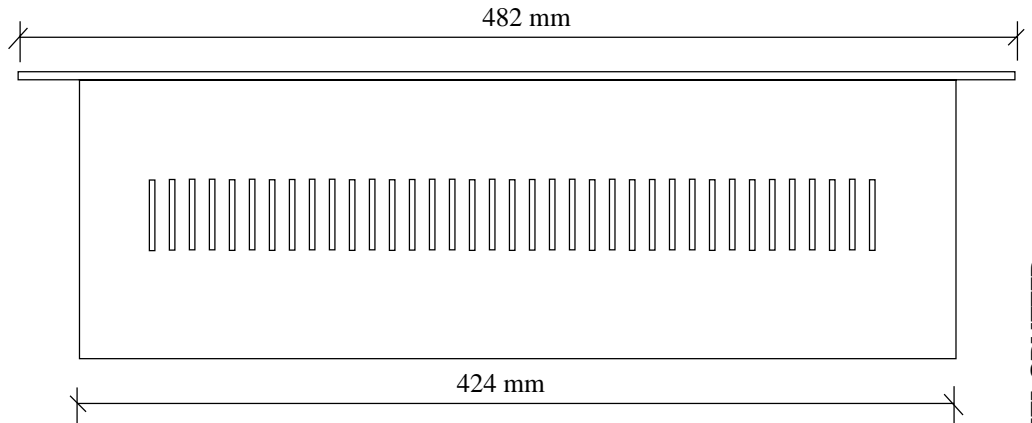
All DMX inputs and outputs, and all operator controls and displays shall be provided on the front panel of the unit.

The front and rear surfaces shall be scratch-resistant 0.25mm Lexan with legends reverse silk-screened from behind.

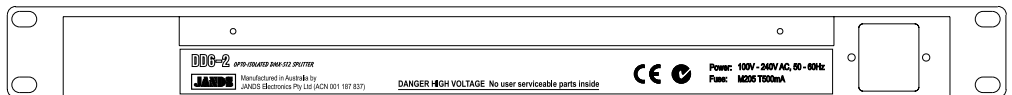
The opto-isolated DMX-512 splitter shall be the JANDS DD6-2.



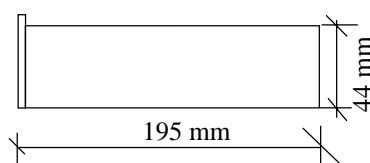
▲ Front panel



▲ Top view



▲ Back panel



▲ Side view

OPTO-ISOLATED DMX-512 DATA SPLITTER

DD6-2

TSS-DD6-2-0210-03