



# JT CURTAIN TRACK

## PROFESSIONAL TRACKING SYSTEM AND ACCESSORIES

Technical Specification Sheet

### DESCRIPTION

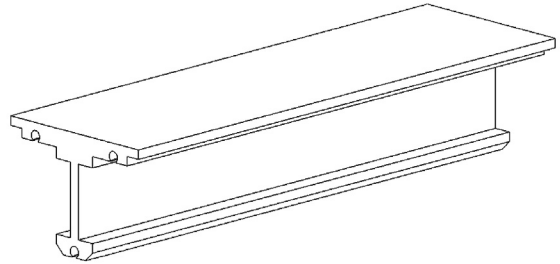
The Jands JT extruded aluminium curtain track is ideal for use in theatres, cinemas and other permanent installations. Unlike steel truss style tracks, the Jands JT extruded track is easily curved and does not require welding. The track is coated with a black anodised finish to enhance its durability and appearance.

### OVERALL SPECIFICATIONS

Material	:	Aluminium
Finish	:	Black anodised
Standard length	:	6.5m
Weight	:	0.948 kg/m (6.16 kg per 6.5m standard length)

### FEATURES

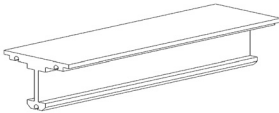
- Designed for medium duty applications
- Aluminium extruded section
- Black anodised matt finish
- Installation via screw fixing to an appropriate surface
- Can be custom curved
- Wide range of accessories available (see below)
- Brackets available for direct fixing to truss, structural members or for hanging
- Fixing at 1 metre centres



### ORDERING INFORMATION

#### TRACK & FIXINGS

**JT CURTAIN TRACK**  
(6.5m length)  
Part number: **MP420L**

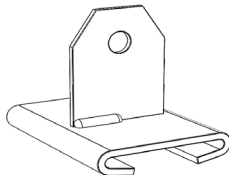


**RUNNER**  
Part number: **MP402**  
Part number: **MP402-50** 50 Pack

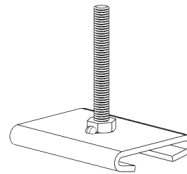


Nylon tyred, ball bearing wheels, black Nylon side plates that attach curtain to track.

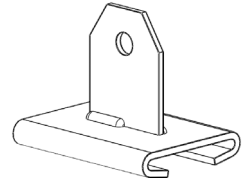
**HANGING MOUNTING BRACKET**  
Part number: **MP403A**  
Hole Dia. 9.5mm



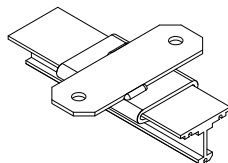
**BOLTED HANGING MOUNTING BRACKET**  
Part number: **MP403B**  
M8 x 65 stud



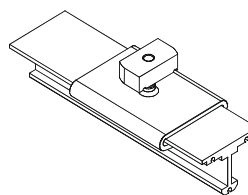
**HANGING MOUNTING BRACKET**  
Part number: **MP403C**  
Hole Dia. 9.5mm



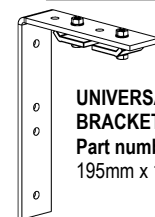
**CEILING FIX MOUNTING BRACKET**  
Part number: **MP403D**



**"UNISTRUT" STYLE MOUNTING BRACKET**  
Part number: **MP403E**  
To suit "Unistrut" type channel

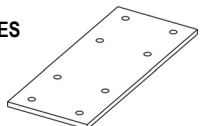


**UNIVERSAL MOUNTING BRACKET**  
Part number: **MP470**  
195mm x 145mm x 6mm

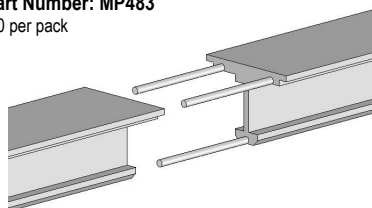


**TRACK SPACER PLATES**  
Part number: **MP478**

Used to offset track for straight overlap - 2 per pack



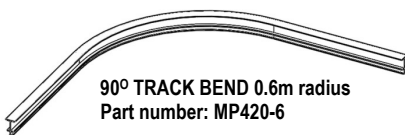
**TRACK JOINING PINS**  
Part Number: **MP483**  
10 per pack



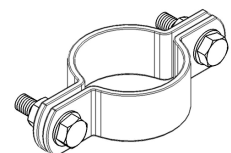
**90° TRACK BEND 0.6m radius**  
Part number: **MP420-6**

**90° TRACK BEND 0.8m radius**  
Part number: **MP420-8**

For hand paged cordless operation only  
Includes 6 x Track Joining Pins



**BARREL CLAMP**  
Part number: **MP459**  
To suit 40NB (48.3mm OD) Tube



Jands Pty Ltd 40 Kent Road Mascot NSW 2020 Australia  
Phone +61 2 9582 0909 Fax +61 2 9582 0999 www.jands.com.au

### ARCHITECT & ENGINEER'S SPECIFICATION

The tracking system shall consist of an extruded aluminium section, anodised matt black, available in continuous lengths up to 6.5m.

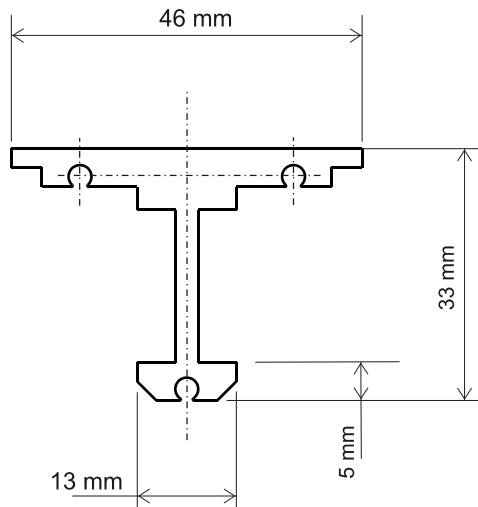
The tracking system shall be designed for screw fixing to a top plate and shall be able to be readily curved to suit custom applications.

A system of accessories to suit the track shall be available including runners, end pulleys, cranked and straight leaders, mounting brackets, etc.

The runners will feature black nylon tyres with ball bearing wheels, silent in operation.

The tracking system shall be available with either a hand drawn cord closing system or a motorised winch unit closing system.

The tracking system and accessories shall be the Jands JT professional tracking system and accessories.

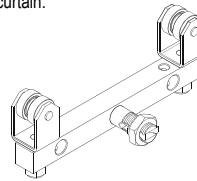


### ORDERING INFORMATION

#### CORD OPERATED AND MOTORISED TRACK SYSTEMS

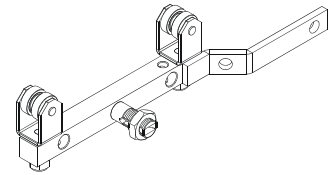
##### STRAIGHT LEADER

**Part number: MP410**  
For overlapping track applications. Attaches to leading edge of curtain.



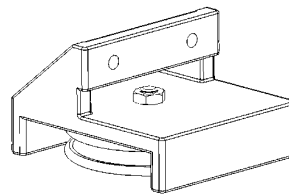
##### CRANKED LEADER

**Part number: MP410A**  
For single track application. Attaches to leading edge of curtain.



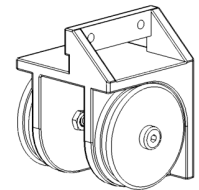
##### SINGLE END PULLEY

**Part number: MP413**  
For rope/wire return to double end pulley (nylon wheels and black aluminium casting).



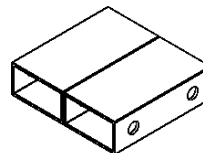
##### DOUBLE END PULLEY

**Part number: MP412**  
For rope/wire return to floor. (nylon wheels and black aluminium casting).



##### SINGLE END PULLEY PACKER

**Part number: MP418**  
Packs single end pulley away from track for overlap track systems only



##### SPRING LOADED FLOOR BLOCK

**Part number: MP451A**  
To tension cord draw systems.



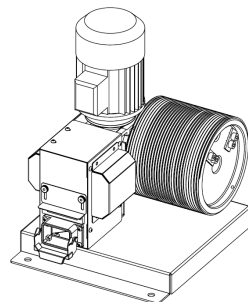
##### SASH WEIGHT (2.5kg)

**Part number: MP471A**  
Constructed from heavy duty red PVC. Suits draw cord tensioning.



##### MOTORISED DRUM WINCH

**Part Number JND-H100D-S / H100D-SE (with encoder option)**  
Complete with limit switches (requires JND-HC01V Curtain Controller)



##### SPRING LOADED DOUBLE END PULLEY

**Part number: MP412A**  
Pulley for tensioning steel wire rope on motorised systems.

