

PDS810

8 WAY 10AMP 2RU POWER DISTRIBUTION PANEL



DESCRIPTION

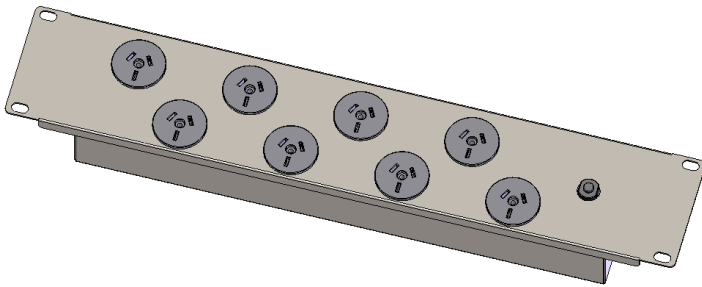
The Jands PDS810 power distribution system is designed for fixed applications where single phase to single phase socket outlet power distribution is required. The unit features a thermal over current device protecting the unit from overloads.

The PDS810 is designed specifically to mount in any standard 19 inch equipment rack, including the Jands "Roobar" system.

The PDS810 is designed and built to comply with AS/NZS 3105:2002.

OVERALL SPECIFICATIONS

| | | |
|---------------------|---|--|
| Supply Type | : | 1 Phase + E |
| Supply Voltage | : | 230-240Vac 50Hz |
| Supply Current | : | 10A max load |
| Supply Connector | : | 10A 3 Pin Plug |
| Supply Cable | : | 1.6m captive flexible tail |
| Output Current | : | 10A / outlet |
| Output Connectors | : | 8 x 10A 3 pin single phase socket outlet |
| Output Protection | : | 1 x 10A Thermal Overload |
| Max Total Load | : | 10A 2400W 230-240Vac |
| Diversity Factor | : | 1.0 |
| Temperature Range | : | 0 °C min to 40 °C max |
| IP Rating | : | IP2x |
| Dimensions (mm) | : | 483(W) x 88(H) x 47(D) (2 RU) |
| Net/Shipping weight | : | 1.8 / 2.1 kg |

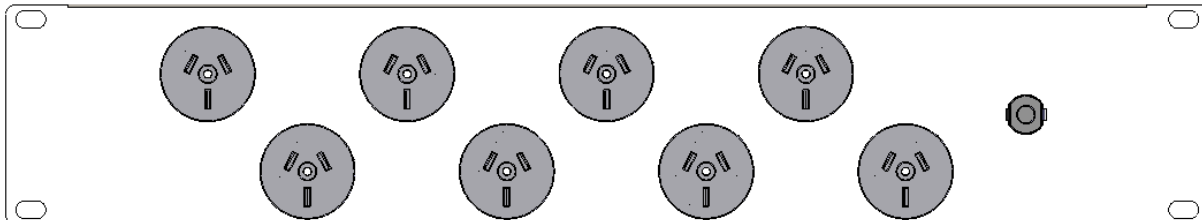


FEATURES

- Eight (8) x 10A socket outlets
- 10A thermal overload protection
- 19 inch rack mounting
- All steel construction

ORDERING INFORMATION

| MODEL/PART | PART NUMBER |
|---|---------------|
| 8 Way 10A 1RU Power Distribution Panel—Black | JND-PDS810-BK |
| 8 Way 10A 1RU Power Distribution Panel—Grey Nurse | JND-PDS810-GY |
| M6 Cage Nuts #8 (50pk) | JND-1558 |
| M6x16mm Black Pozi Button Head Bolts (50pk) | JND-1559 |



8 WAY 10AMP 2RU POWER DISTRIBUTION PANEL

PDS810

Jands Pty Ltd 40 Kent Road Mascot NSW 2020 Australia
 Phone (+61) 2 9582 0909 Fax (+61) 2 9582 0999 www.jands.com.au

Specifications subject to change without notice. Manufactured by Jands Pty Ltd ABN 45 001 187 837.
 Note: While all due care and attention has been taken in the preparation of this document, Jands Pty Ltd shall not be liable for any inaccuracies or omissions which may occur therein

PDS810

8 WAY 10AMP 2RU POWER DISTRIBUTION PANEL



ARCHITECT & ENGINEER'S SPECIFICATION

Mechanical

The Power Distribution Unit shall mount in a standard 19 inch equipment rack. The Power Distribution Unit shall be 483mm wide x 75mm deep x 88mm high (2RU).

The Power Distribution Unit shall be constructed of 1.2mm steel. All metal surfaces shall be properly treated and finished in durable powdercoat.

All operator controls shall be provided on the front panel of the unit. All markings shall be silkscreen printed on the front and back panels.

Electrical

The Power Distribution Unit shall operate from a single phase and earth supply of 230-240 volts (nominal) phase-to-neutral with a supply frequency of 50Hz.

The Power Distribution Unit shall be fitted with eight (8) 10A single phase unswitched socket outlets.

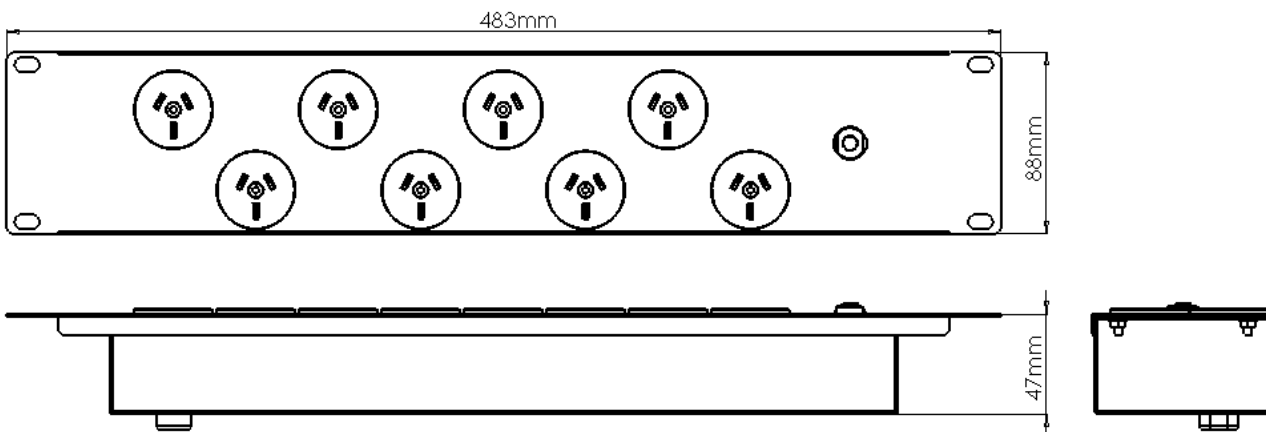
The Power Distribution Unit shall be able to draw 10 amps maximum.

The Power Distribution Unit shall be fitted with a captive 1.6 metre power cable fitted with a 10 amp, 3 pin, single phase plug.

A master single pole 10 amp thermal overload circuit breaker shall disconnect the unit in the event of an overload.

The Power Distribution Unit shall be designed and tested as an Electrical Portable Outlet Device to AS/NZS 3105:2002.

The Power Distribution Unit shall be the JANDS PDS810 8 Way 10 Amp 2RU Power Distribution Panel.



8 WAY 10AMP 2RU POWER DISTRIBUTION PANEL

PDS810

Jands Pty Ltd 40 Kent Road Mascot NSW 2020 Australia
 Phone +61 2 9582 0909 Fax +61 2 9582 0999 www.jands.com.au