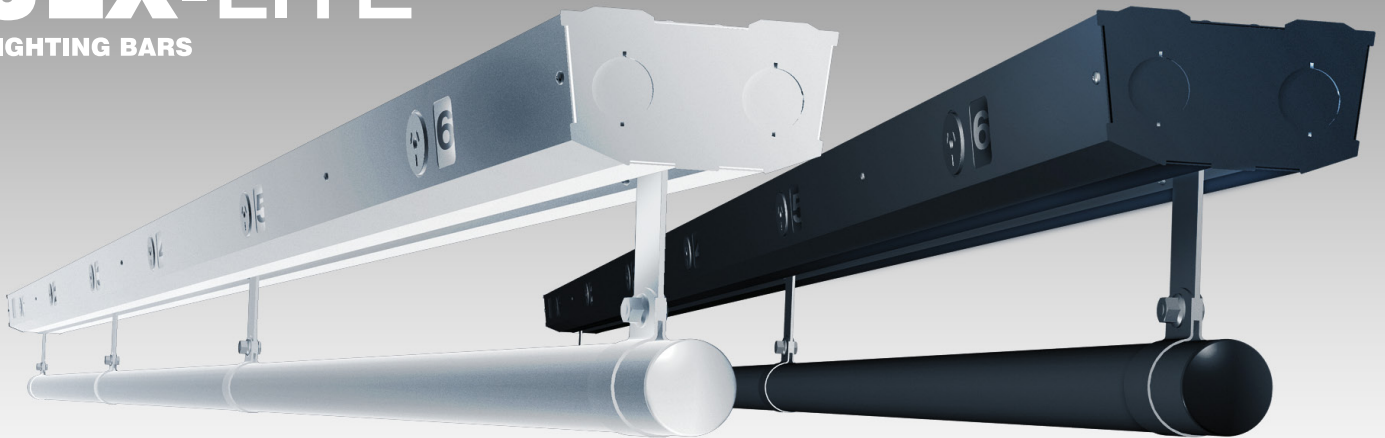




JLX-LITE

LIGHTING BARS



Jands JLX-LITE

Need a lighting bar that is economical, quick to install and designed to meet all electrical and safety regulations? Introducing the Jands JLX-LITE - a lightweight lighting bar system that has been designed with ease of installation in mind. The JLX-LITE is intended for static installations such as school halls, clubs, ballrooms and exhibition spaces and designed to be installed by a licensed electrician.

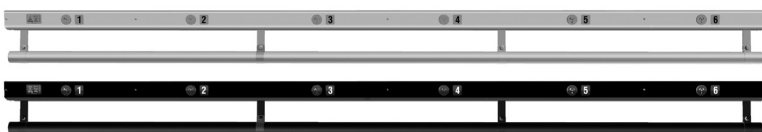
The JLX-LITE Lighting Bar system consists of a base plate and aluminium side panels. The base plate is segregated allowing you to run both power and data along the bar avoiding electrical interference and guaranteeing compliance with Australian electrical regulations .

A variety, and generous distribution, of fixing holes means that the JLX-LITE can be either flush mounted to the ceiling or suspended when using industry standard threaded rod. This helps the bar blend into the room, particularly when you have the option of both black and white*.

JLX-LITE modules come in 2m or 3m long ducts, with an underhung aluminium 48.4mm OD tube that are supplied singly or in packs of 4.

Features

- Durable construction, lightweight with black or white finish.
- Distributed Loads of (up to) 50kg/m and Point Loads of (up to) 50kg.
- Two module lengths, 2m with 4 outlets and 3m with 6 outlets for simple user customised solutions from standard building blocks.
- Multiple mounting holes to assist static installations.
- 10A standard outlets.
- Cable knock-outs for alternative cable entry points.
- ELV knock-outs for industry standard fittings.



Available in black or white.

* If you require another colour we suggest purchasing the white finish which you can then paint accordingly to your desired colour.

Overall Specifications

Depth :	147mm
Height :	210mm
Duct & Tube Length :	2000mm (20M4) 3000mm (30M6)
Weight :	9kg (20M4) 12kg (30M6)
Outlets :	10A x 4 (20M4) 10A x 6 (30M6)
Outlet Density :	500mm centres
Loading Capacities :	Distributed Load (UDL) 50kg/m (max) Point Load 50kg (max)

Ordering Information

MODEL/PART	PART NUMBER
Black version:	
2m Lighting Bar, 2 x ELV knock-outs, 4 x 10A outlets	JND-JLXL20M4
2m Lighting Bar, 2 x ELV knock-outs, 4 x 10A outlets, 4 Pack	JND-JLXL20M4/4
3m Lighting Bar, 3 x ELV knock-outs, 6 x 10A outlets	JND-JLXL30M6
3m Lighting Bar, 3 x ELV knock-outs, 6 x 10A outlets, 4 Pack	JND-JLXL30M6/4
White version:	
2m Lighting Bar, 2 x ELV knock-outs, 4 x 10A outlets	JND-JLXL20M4W
2m Lighting Bar, 2 x ELV knock-outs, 4 x 10A outlets, 4 Pack	JND-JLXL20M4W/4
3m Lighting Bar, 3 x ELV knock-outs, 6 x 10A outlets	JND-JLXL30M6W
3m Lighting Bar, 3 x ELV knock-outs, 6 x 10A outlets, 4 Pack	JND-JLXL30M6W/4

